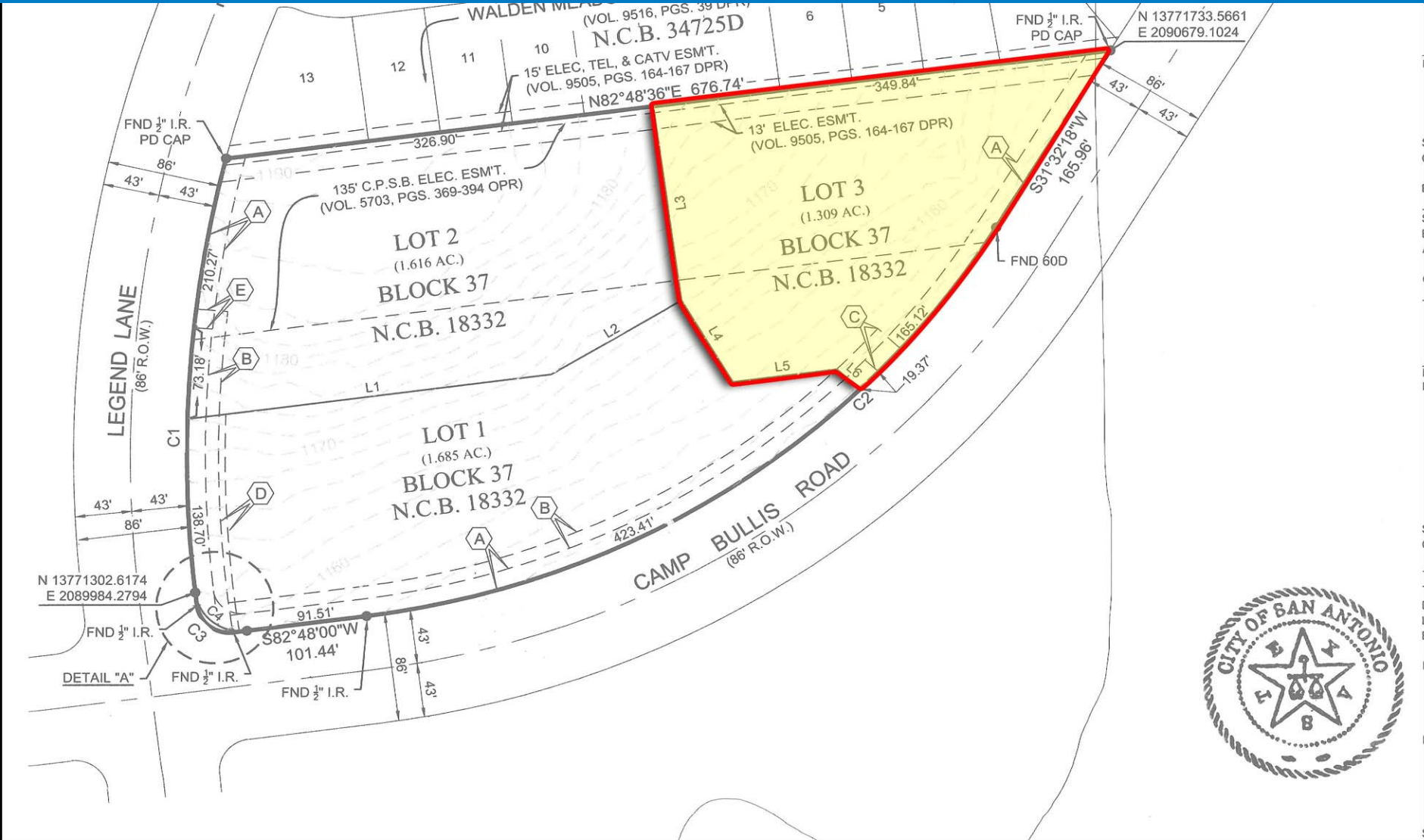


# Land for Sale - 1.309 Acres

NE Corner of Camp Bullis Road & Legend Lane, SA, TX 78256



Adjacent to Crownridge Office Park  
Platted Lot with all Utilities to the site  
No Detention or Water Quality required

Asking Price:  
\$9.00 PSF

For information please contact:  
MICHAEL WEISS or NICK PRATER  
210-342-4242  
[mike@4mrealty.com](mailto:mike@4mrealty.com) / [nick@4mrealty.com](mailto:nick@4mrealty.com)



# Land for Sale - 1.309 Acres

NE Corner of Camp Bullis Road & Legend Lane, SA, TX 78256



1.309 ACRES





# Land for Sale - 1.309 Acres

NE Corner of Camp Bullis Road & Legend Lane, SA, TX 78256



**4M Realty**  
COMPANY



**LOT 3**  
**1.309 ACRES**

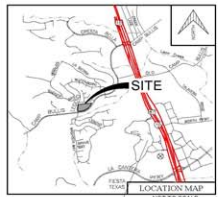
**LEGEND LANE**

**CAMP BULLIS ROAD**



# Land for Sale - 1.309 Acres

NE Corner of Camp Bullis Road & Legend Lane, SA, TX 78256

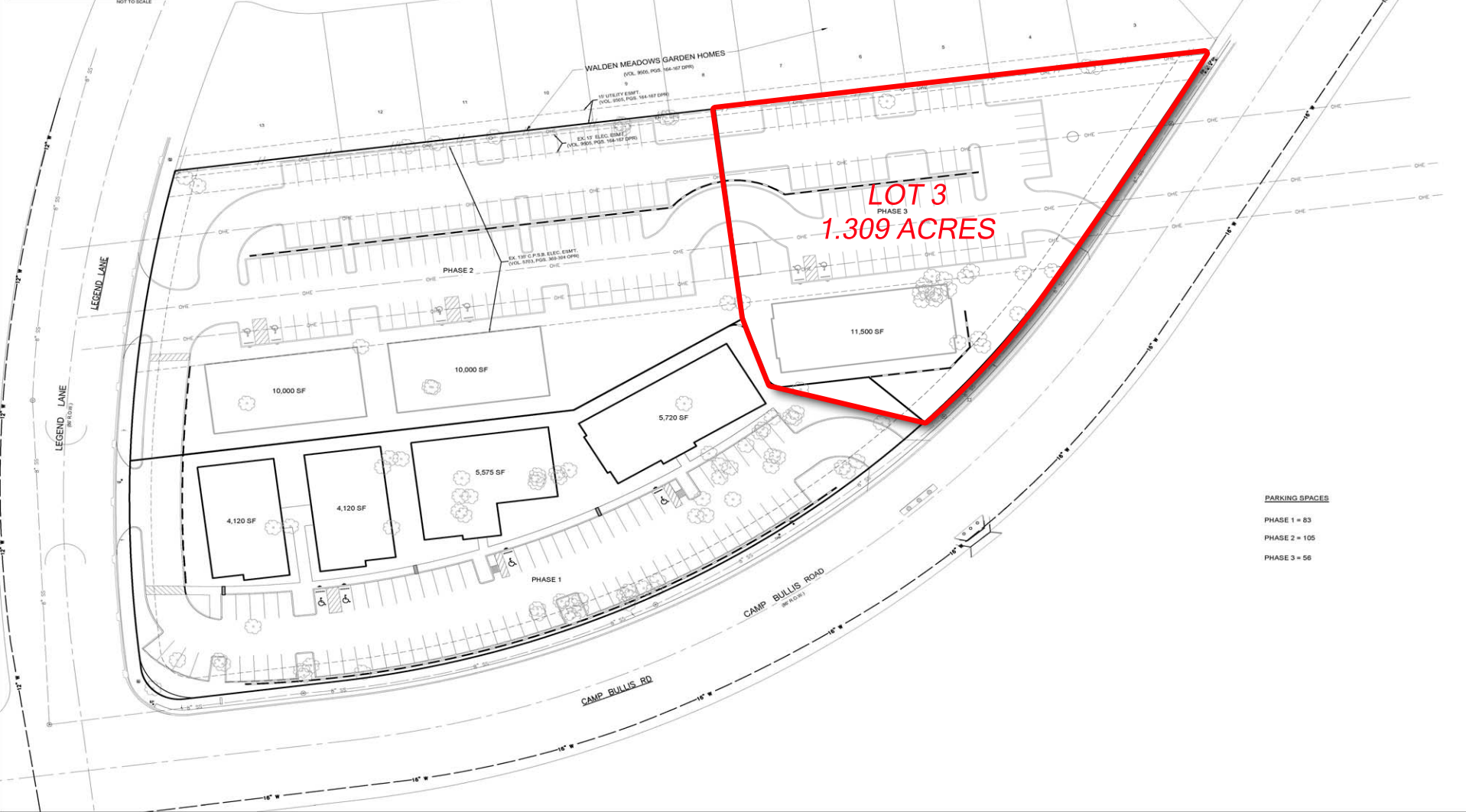


**INTERIM REVIEW ONLY**  
 DOCUMENT INCOMPLETE - NOT INTENDED FOR PERMIT, BIDDING OR CONSTRUCTION.  
 ENGINEER: JUSTIN K. SHIPLEY  
 P.E. REG. NO.: 103767  
 DATE: 10-28-15

SCALE: 1" = 30'

NORTH

PRIMARY CONTACT:



**PARKING SPACES**

- PHASE 1 = 83
- PHASE 2 = 105
- PHASE 3 = 56

**MACINA • BOSE • COPELAND & ASSOC., INC.**  
 CONSULTING ENGINEERS AND LAND SURVEYORS  
 1105 Central Parkway North, San Antonio, Texas 78202  
 (710) 545-1122 Fax (710) 545-8002 www.mcbca.com  
 FIRM REGISTRATION NUMBER: 18.P.E.F. 784 & 78.P.L.S. 10017100



**CROWN RIDGE OFFICE PARK**  
 SAN ANTONIO, TX  
 SITE PLAN

REVISION	DATE	BY	DESCRIPTION



# Land for Sale - 1.309 Acres

NE Corner of Camp Bullis Road & Legend Lane, SA, TX 78256



**4M Realty**  
COMPANY

